

The 17th Japan-Korea-China Joint Conference on Geography

2nd Circular (version November 10, 2025)

Join us everyone, in inspiring all generations and inspiring new geography!

This Asia-based conference has provided academic exchanges and discussion by dedicated researchers, mainly young geographers from Japan, Korea and China, since 2006. The 17th conference will be held in Kyoto, Japan in 2025. Join us, enjoy academic exchange and deepen your friendship!

1. SCHEDULE

November 11-14, 2025

2. VENUE

Kyoto, JAPAN

• Convention Venue: **Kyoto Terrsa**

(70 Higashikujo Shimotonodacho, Minami Ward, Kyoto, 601-8047)

• Registration and Welcome Party: **Mariage Grande Kyoto**

(Kyoto Avanti 8th Floor, 31 Higashikujo Nishisannocho, Minami Ward, Kyoto, 601-8003)

• Accommodation: provided by an agency company (JTB)

3. THEME

Coordinating the preservation of local culture and the promotion of tourism

4. PROGRAM

time	Agenda	Details		Location
Tuesday, 11th				
17:00-18:00	Registration	Check-in		Mariage Grande Kyoto
18:00-20:00	Welcome Party	Dinner		
Wednesday, 12th				
8:30-17:00		Reception		Kyoto Terrsa 1F, West Building
9:00-10:30		Opening Ceremony		Hall
10:30-11:00		Break Time		
11:00-12:30	Conference	Session1: GIS/Remote sensing	Oa-1~5	Hall
		Session2: Social geography	Oa-6~10	Room1
		Session3: Population geography	Oa-21~25	Room2
		Session4: Economic geography	Oa-36~40	Room3
		Session5: Urban geography	Oa-51~55	Room4
		Session6: Regional geography	Oa-66~70	Room5
12:30-13:20	Lunch Time	Poster Session		Hall
13:30-15:00	100th Symposium		Sa-1~5	Hall
	Conference	Session2: Social geography	Oa-11~15	Room1
		Session3: Population / Economic	Oa-26~30	Room2
		Session4: Economic geography	Oa-41~45	Room3

		Session5: Urban geography	Oa-56~60	Room4
		Session6: Political geography	Oa-71~75	Room5
15:00-15:30	Break Time			
15:30-17:00	100th Symposium		Sa-1~5	Hall
	Conference	Session2: Social geography	Oa-16~20	Room1
		Session3: Economic geography	Oa-31~35	Room2
		Session4: Economic geography	Oa-46~50	Room3
		Session5: Urban geography	Oa-61~65	Room4
		Session6: Geomorphology / GIS	Oa-76~80	Room5
Thursday, 13th				
8:30-17:00	Reception			Kyoto Terrsa 1F, West Building
9:00-10:30	Conference	Session1: GIS/Remote sensing	Oa-81~85	Hall
		Session2: Education / Rural geography	Oa-96~100	Room1
		Session3: Hydrology / Cultural	Oa-116~120	Room2
		Session4: Regional geography	Oa-136~140	Room3
		Session5: Urban geography	Oa-156~160	Room4
		Session6: Climatology	Oa-178~180	Room5
10:30-11:00	Break Time			
11:00-12:30	Conference	Session1: GIS/Remote sensing	Oa-86~90	Hall
		Session2: Rural geography	Oa-101~105	Room1
		Session3: Cultural geography	Oa-121~125	Room2
		Session4: Regional geography	Oa-141~145	Room3
		Session5: Urban geography	Oa-161~165	Room4
		Session6: Climatology	Oa-186~190	Room5
12:30-13:30	Lunch Time	Poster Session		Hall
13:30-15:00	Conference	Session1: GIS/Remote sensing	Oa-91~95	Hall
		Session2: Rural geography	Oa-106~110	Room1
		Session3: Cultural geography	Oa-126~130	Room2
		Session4: Regional geography	Oa-146~150	Room3
		Session5: Urban geography	Oa-166~170	Room4
		Session6: Climatology	Oa-186~190	Room5
15:00-15:30	Break Time			
15:30-17:00	Conference	Session2: Rural geography	Oa-111~115	Room1
		Session3: Cultural geography	Oa-131~135	Room2
		Session4: Regional geography	Oa-151~155	Room3
		Session5: Urban geography	Oa-171~175	Room4
		Session6: Biological geography	Oa-191~195	Room5
17:30-18:00	Closing Ceremony			Hall
18:00-20:00	Farewell Party			Hall

Friday, 14th			
08:40-09:00	—	Meet at Kyoto Station Charter Bus Stop	
09:00-09:45	Bus Travel	From Kyoto Sta. to Uji Area	
09:45-11:30	Tour	Tour of the Uji Area	
11:45-12:45	Lunch Time	Lunch at Uji (Kisen-Chaya)	
12:45-13:15	Bus Travel	From Uji Area to Fushimi Area	
13:15-15:15	Tour	Tour of the Fushimi Area	
15:15-15:45	Bus Travel	From Fushimi Area to Kyoto Bamboo Park	
15:45-16:30	Tour	Tour of Kyoto Bamboo Park	
16:30-17:00	Bus Travel	Travel to Kyoto Station	
17:00	—	Disperse at Kyoto Station	

Special Announcement:

Geographical Association of Japan 100th Anniversary International Symposium (Wednesday, 12th)

This symposium will be held in parallel with the regular sessions.

- **Date & Time:** Wednesday, 12th November 2025, 13:30 – 17:00 (Doors open at 12:45)
- **Venue:** Terrsa Hall (Reception: 1F, West Building)

5. PRESENTATION GUIDELINE

Oral presentation

- In general, the duration is fixed at 15 minutes/talk including QA, discussion time and switching time. *Except for invited talks.
- In principle, oral presentations should be given using PowerPoint or other slides prepared by the presenters.

Poster presentation

- Posters cannot exceed **900 mm** in width or **1200 mm** in height.
- There is no poster printing service desk on the venue.

6. OFFICIAL LANGUAGE

English

7. TOPICS

Human/Physical Geography, Geomorphology, Climatology, Interdisciplinary Research

We welcome various theme and target from a Geographical perspective :

- urban/rural transformation, aging society, population explosion, globalization, neoliberalization,
- global/local climate change, heat island, paleoclimatology,
- culture and community, global/local environment and governance in East Asia,
- landscape response to tectonic and climatic forcing, structural and chronological evolution of active fold and thrust belts, risk management in East Asia,
- GIS/RS based analysis, geographical research on new theories and new methods and so on

8. IMPORTANT DATES

- ~~18th March, 2025 First Circular, Homepage release~~
- ~~1st June, 2025 Call for Abstracts and Papers~~
- ~~30th June, 2025 Abstract and Paper submission Deadline from participants from China~~
- ~~1st August, 2025 Acceptance Notification for participants from China~~
- ~~14th August, 2025 Start of delivery of Visa documents to participants from China~~

- ~~20th, September, 2025 Abstract and Paper submission Deadline from Korea and Japan~~
- ~~Late October, 2025 Draft program release~~
- 11th-14th November 2025 Conference

9. FEES & HOTEL

- **Participants from China: 98,000JPY***

Covers hotels (**4 nights, November 11-14**), admission to the conference (including the conference packages), 4 breakfasts & coffee breaks, 3 lunches, the welcome party, the farewell party and the field tour. The organizing committee will arrange the hotel reservations for participants from China, as it is required for visa application purposes.

Note: Participants from China who do **not** require a visa are requested to arrange their own hotel.

* **Visa Application & Review Process:** For participants from China, a visa is required to enter Japan, and the organizing committee must provide supporting documents, including proof of accommodation. Additionally, due to limited capacity, we will conduct a review process to manage the number of participants. Please note that abstract submission will be subject to this review process.

- **Participants from Korea and Japan (In the case of participation in the field tour): 30,000JPY**

covers admission to the conference (including the conference packages) & coffee breaks, 3 lunches, the welcome party, the farewell party and the field tour. **This fee does NOT cover any accommodation. Please reserve your own hotel room.**

- **Participants from Korea and Japan (In the case of non-participation in the field tour): 27,000JPY**

covers admission to the conference (including the conference packages) & coffee breaks, 2 lunches, the welcome party, the farewell party. **This fee does NOT cover any accommodation. Please reserve your own hotel room.**

10. PAYMENT

The registration fee can ONLY be paid by credit card at the conference web page.

11. FIELD TOUR (14th November, 2025)

We have two options on our field tour.

(1) Private Charter Bus Tour

We will tour the Uji and Fushimi areas by chartered bus. Participants will travel according to the schedule determined by the organizing committee.

Uji is known for its tea culture and its relationship with literature and history. In Fushimi area (southern part of Kyoto City), we learn about the history of sake brewing, water transportation, and disasters. We will also visit to Kyoto Bamboo Park. Overall, we plan to deepen our understanding of tourism resources outside central Kyoto, their relationship with disasters, and approaches to sustainable regional development.



(2) Self-Guided Tour

We will provide participants with information about excursions in the Kyoto area. Participants will arrange their own destinations and schedules for their excursions.

12. ACCESS TO THE VENUE

• Choosing the Right Airport

If you are flying from China or South Korea, the most convenient international airports are:

- **Kansai International Airport (KIX):** The largest international gateway in western Japan.
- **Chubu Centrair International Airport:** Good access to Kyoto via Shinkansen (bullet train).
- **Kobe Airport:** Often less crowded than KIX, with quicker immigration and baggage claim.



Kansai International Airport (KIX) offers **6 direct flight routes from South Korea**, including Seoul (Incheon and Gimpo), Cheongju, Jeju, Busan, and Daegu, and **29 direct flight routes from China**, including Beijing (Capital and Daxing), Shanghai (Pudong), Guangzhou, Shenzhen, Hangzhou, Chengdu (Tianfu), Xi'an, Tianjin, Nanjing, Chongqing, Qingdao, Dalian, Fuzhou, Xiamen, Shenyang, Harbin, Kunming, Changsha, Jinan, Wuhan, Ningbo, Hefei, Guiyang, Haikou, Lanzhou, Wuxi, Shijiazhuang, Nanning, and Nantong.

You can get more information about the Kansai International Airport (KIX):

English: <https://www.kansai-airport.or.jp/en/>

Korean: <https://www.kansai-airport.or.jp/kr/>


Chinese: <https://www.kansai-airport.or.jp/cn/>


- **From Kansai International Airport to Kyoto Station**

- By Train (Recommended)


Take the JR Haruka Express from KIX to Kyoto Station (Approx. 80 minutes).

2:44 PM - 4:04 PM
(1 hr 20 min)




 **HARUKA**

2:44 PM from Kansai-Airport Station
¥3,440 every 30 min

 **Add to Calendar**

2:44 PM ○ Kansai International Airport
1番地 Senshukukokita, Izumisano, Osaka
549-0001

2:44 PM ○ Kansai-Airport Station


 **HARUKA** Haruka 32 Limited
Express Kyoto

▼ 1 hr 20 min (4 stops)

4:04 PM ○ Kyoto Station

4:04 PM ● Kyoto Station
Higashishiokoji Kamadonocho, Shimogyo
Ward, Kyoto

Cost: ¥3,440



- By Bus

Take the Airport Limousine Bus from KIX to Kyoto Station (Approx. 90 minutes).

More information: <https://www.kate.co.jp/en/timetable/detail/KY>

- **From Chubu Centrair International Airport to Kyoto Station**

- By Train (Recommended)

Around 80 minutes to Kyoto station by train (Meitetsu + Shinkansen)

12:37 PM - 2:00 PM
(1 hr 23 min)

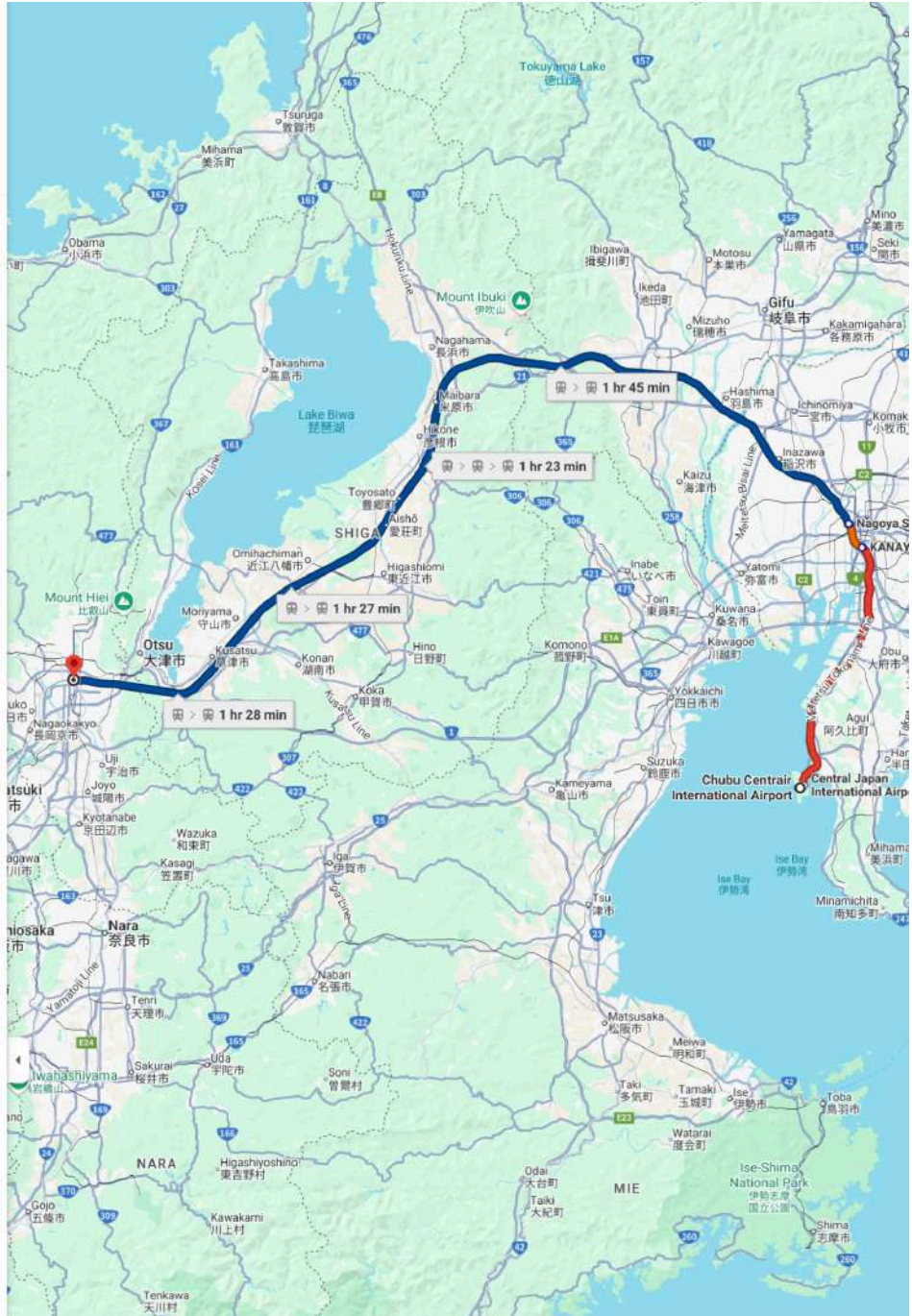
Meitetsu-Limited Express > Chuo Line > Tokaido Shinkansen

12:37 PM from Central Japan International Airport Station
¥7,270 6 min

Add to Calendar

- 12:37 PM Chubu Centrair International Airport
1 Chome-1 Centrair, Tokoname, Aichi 479-0881
- 12:37 PM Central Japan International Airpo...
Meitetsu-Limited Express
Musky Meitetsu-Nagoya
24 min (2 stops) · Platform 1 · Stop ID: TA24
- 1:01 PM KANAYAMA STATION
Walk
About 3 min
- 1:12 PM KANAYAMA STATION
Chuo Line Sub Rapid Nagoya
4 min (non-stop) · Platform 2 · Stop ID: CF01
- 1:16 PM Nagoya Station
Walk
About 2 min
- 1:26 PM Nagoya Station
Tokaido Shinkansen Nozomi
69 Nozomi Hiroshima
34 min (non-stop) · Platform 17
- 2:00 PM Kyoto Station
- 2:00 PM Kyoto Station
Higashishiokoji Kamadonochi, Shimogyo Ward, Kyoto

Cost: ¥7,270



You can get more information about the Chubu Centrair International Airport:

English: <https://www.centrair.jp/en/>

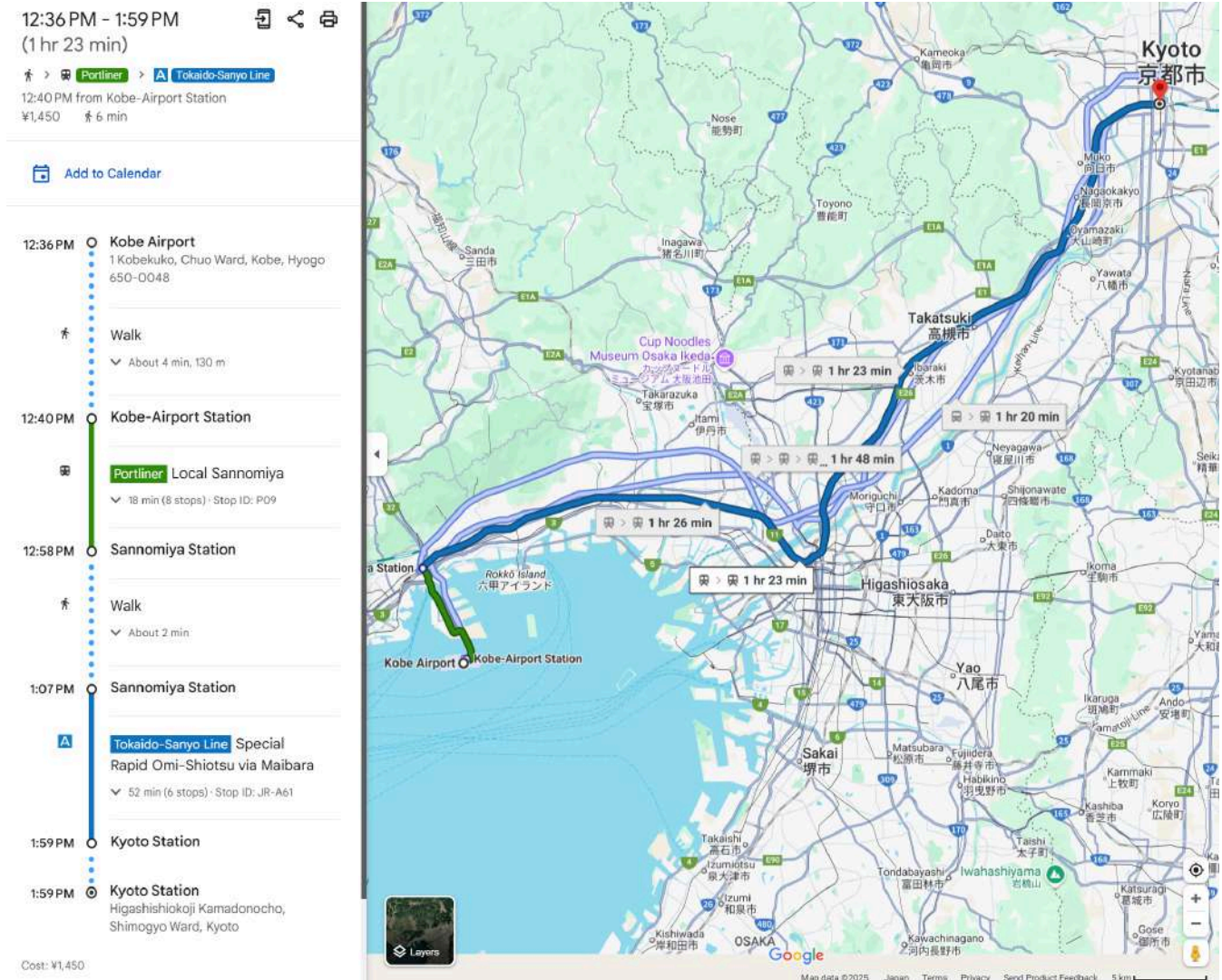
Korean: <https://www.centrair.jp/ko/>

Chinese: <https://www.centrair.jp/zh/>

- **From Kobe Airport to Kyoto Station**

- By Train (Recommended)

Around 80 minutes to Kyoto station by train (Port Liner + JR lines).



You can get more information about the Kobe Airport:

English: <https://www.kairport.co.jp/en>

Korean: <https://www.kairport.co.jp/kr>

Chinese: <https://www.kairport.co.jp/ch>

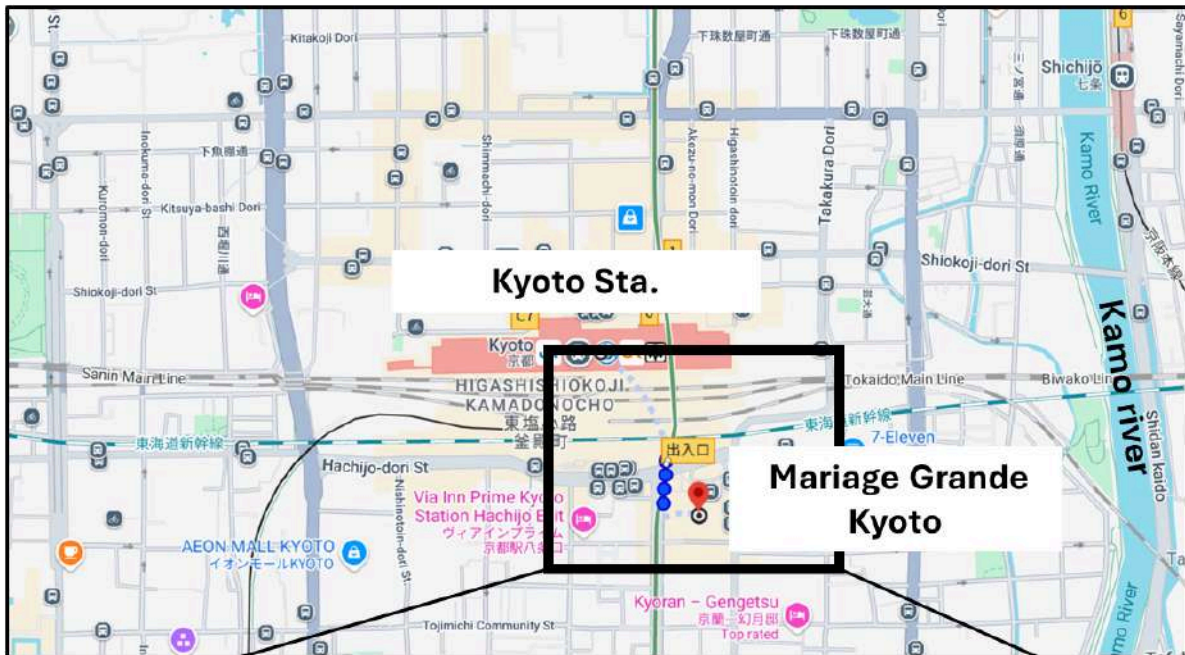
- From Kyoto Station to Mariage Grande Kyoto (Registration and Welcome Party)

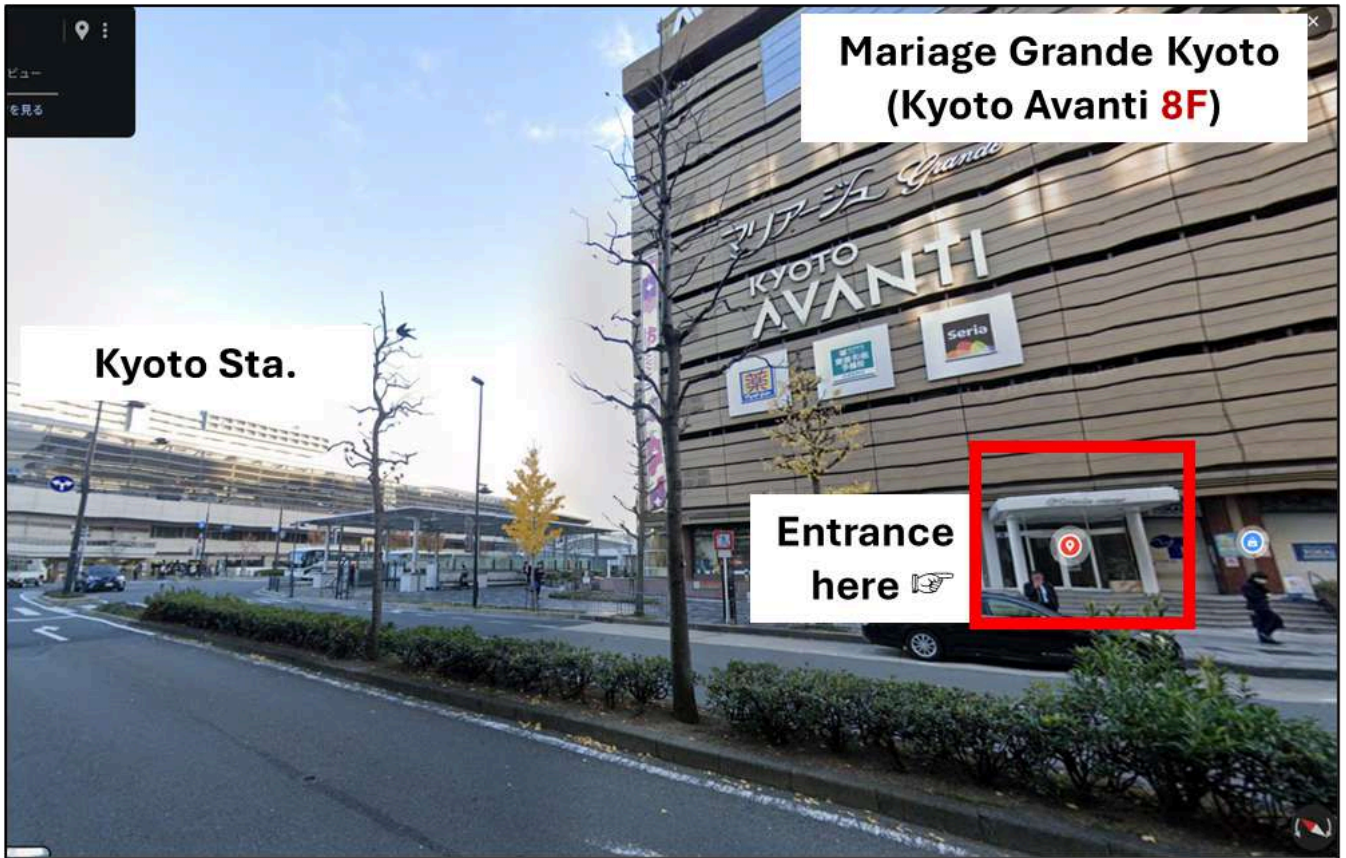
<https://mariage-grande.com/access/>

- By Walking (Recommended)

It is just across the street from the Hachijo East Exit of JR Kyoto Station.

There is also a direct underground passageway, so you can come here comfortably regardless of the weather.





- From Kyoto Station to Kyoto Tersa (Conference Venue)

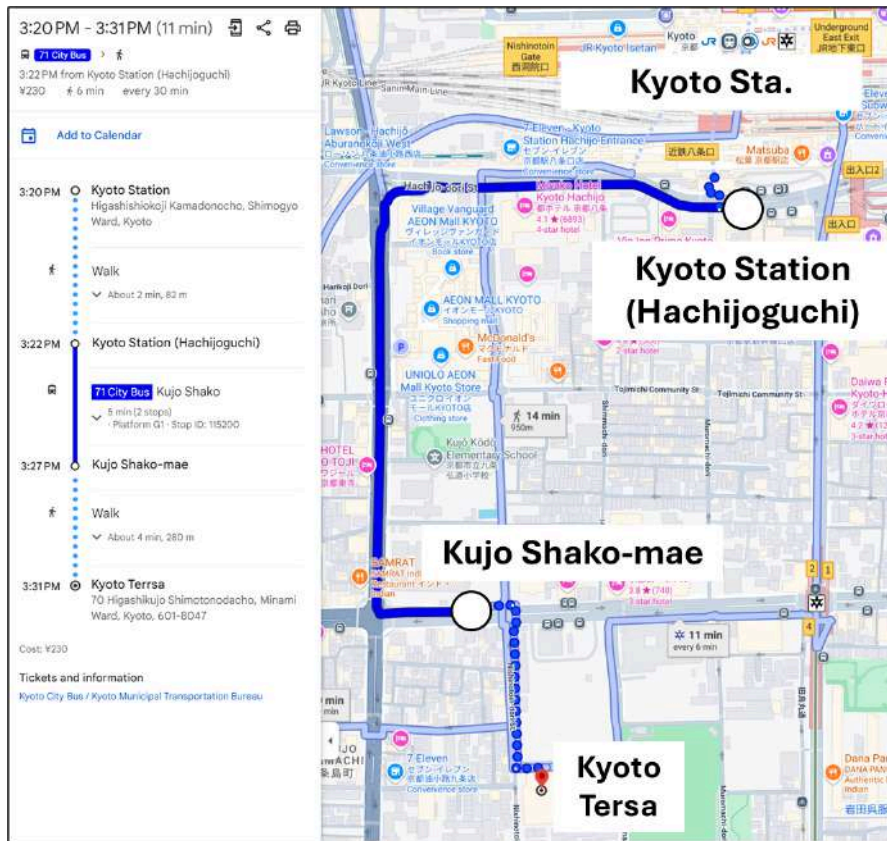
https://www.kyoto-tersa.or.jp/floor_map/en.php

<https://www.kyoto-tersa.or.jp/parking/>

•By Walking: It takes 14 minutes (950 m).



•By City Bus (No. 71): It takes 11 minutes (¥230, every 30 min).



13. ORGANIZATION

Organizer: The Organizing Committee of the 17th Japan-Korea-China Joint Conference on Geography

Co-organizer: Geographical Association of Japan (GAJ)
The Korean Geographical Society (KGS)
The Geographical Society of China (GSC)

Supporting organization:

[Geographic Information System Association of Japan](#)
[Japanese Organization of Geographical Sciences](#)
[The Association of Historical Geographers in Japan](#)
[The Human Geographical Society of Japan](#)
[The Japanese Society for Geographical Sciences](#)
[The Tohoku Geographical Association](#)
[Tokyo Geographical Society](#)

Cooperating institution:

[Geography Department, Ritsumeikan University](#)

Sponsor

[Esri Japan Corporation](#)

14. ORGANIZING COMMITTEE

Chairperson:

Prof. YANO Keiji (Ritsumeikan University, Japan)

Secretary-General:

Prof. YAMAMOTO Kenta (Kokugakuin University, Japan)

Members of Committee:

Prof. IWAI Yuki (The University of Tokyo, Japan)

Prof. KAWAZOE Wataru (Rissho University, Japan)

Prof. KIDOGUCHI Tomoaki (Takushoku University, Japan)

Prof. KURIBAYASHI Azusa (Kogakkan University, Japan)

Prof. KOTSUBO Masaki (Tohoku University, Japan)

Prof. SASAKI Toru (Hosei University, Japan)

Prof. TENG Yuanyuan (Tohoku University, Japan)

Prof. TERATOKO Yukio (Ritsumeikan University, Japan)

Ph.D. candidate ONISHI Kenta (The University of Tokyo, Japan)

Prof. YAMAUCHI Hiroyuki (Ritsumeikan University, Japan)

Ph.D. candidate WANG Zihao (Ritsumeikan University, Japan)

15. INTERNATIONAL COMMITTEE

Chief:

Prof. ARAKI Hitoshi (Ritsumeikan University, Japan)

Member of Committee:

Prof. YAMAMOTO Kenta (Kokugakuin University, Japan)

Prof. KURIBAYASHI Azusa (Kogakkan University, Japan)

Prof. NAHM Kee-Bom (University of Seoul, Korea)

Prof. KIM Sook-Jin (Konkuk University, Korea)

Prof. SONG Wonseob (Jeju National University)

Prof. CHAI Yanwei (Peking University, China)

Prof. NAN Ying (Yanbian University, China)

Prof. ZHANG Yan (Beijing Union University, China)

16. ADVISORY COMMITTEE

Prof. IDA Yoshiyasu (President of GAJ, Japan)

Prof. PARK Soo-Jin (Executive President, KGS, Korea)

Prof. CHEN Fahu (Executive President of GSC, China)

Check the latest information at our website!

<https://www.dh-jac.net/wp/17jkc/>

Contact us from following e-mail address!

17jkc2025@gmail.com

We are really looking forward to your participation!